
Joint Sector Group for ERA Task Force on wagon/axle maintenance

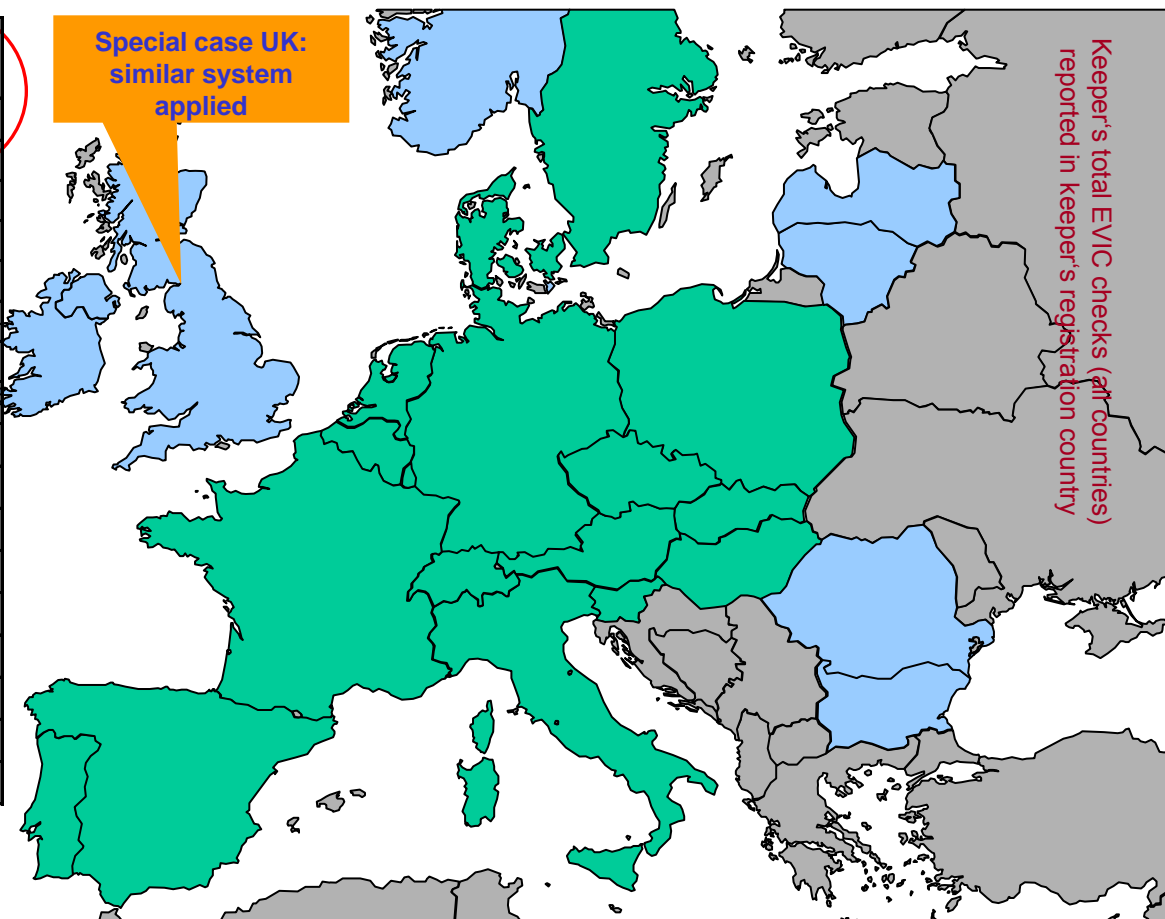
**EVIC European tracing report as per October 2011
(as by November 30th)**

*ERA, Lille
13th December 2011*

Status of the EVIC Visual Inspections total as per October 2011

	Wagons checked	Other	EVIC ok	EVIC X	EVIC C	Total axle
total	290.287	93.690	643.961	24.288	363.655	1.124.969
D	184.019	60.983	369.143	17.769	274.615	722.510
AT	10.707	11.332	23.901	1.025	6.450	42.708
F	25.108	8.956	73.018	672	8.960	91.606
H	5.449	30	17.966	17	3.264	21.277
IT	7.387	894	12.559	488	12.441	25.819
BE	4.749	0	17.005	129	152	17.224
CH	19.081	8.179	41.551	996	21.509	72.235
ES	1.887	1.310	2.523	2.044	1.407	7.284
CZ	158	0	478	0	21	499
PL	18.478	346	63.839	390	8.437	73.012
SK	8.887	23	14.616	7	19.295	33.941
SI	449	479	760	24	592	1.855
PT	787	897	151	553	1.086	2.687
LU	1.626	16	2.286	12	3.925	6.239
SE	1.372	245	3.735	162	1.347	5.489
NL	143	0	430	0	154	584

Special case UK:
similar system
applied



* 16 countries, 163 wagon keepers

(June 2011: 226 T wagons, 881 T axles)

X: Remove from service without delay

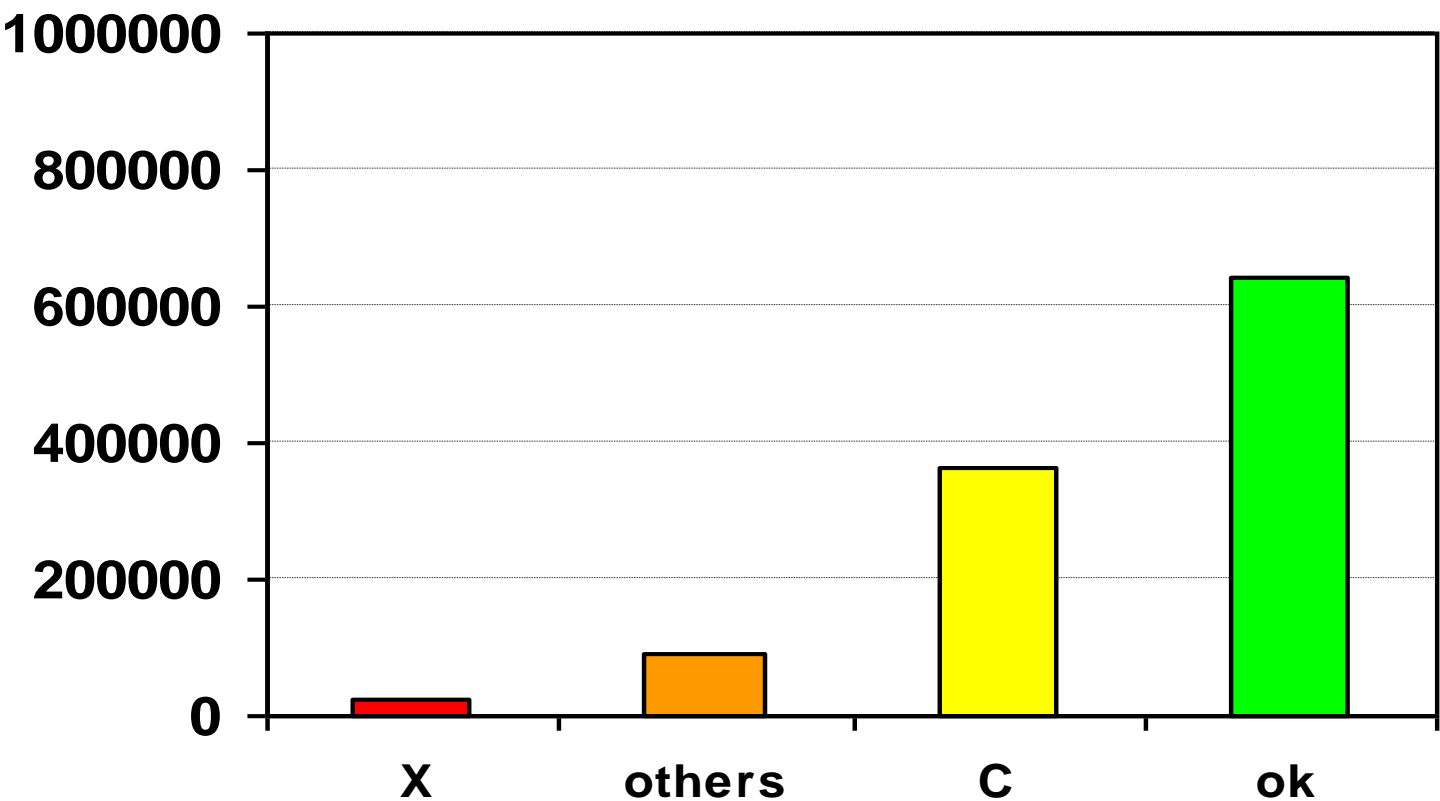
others: sorted out for other reasons, e.g. reprofiling

C: Leave in service until the next EVIC check

ok: no defects, leave in service

Status of the EVIC Visual Inspections

EU total per October 2011



X: Remove from service without delay

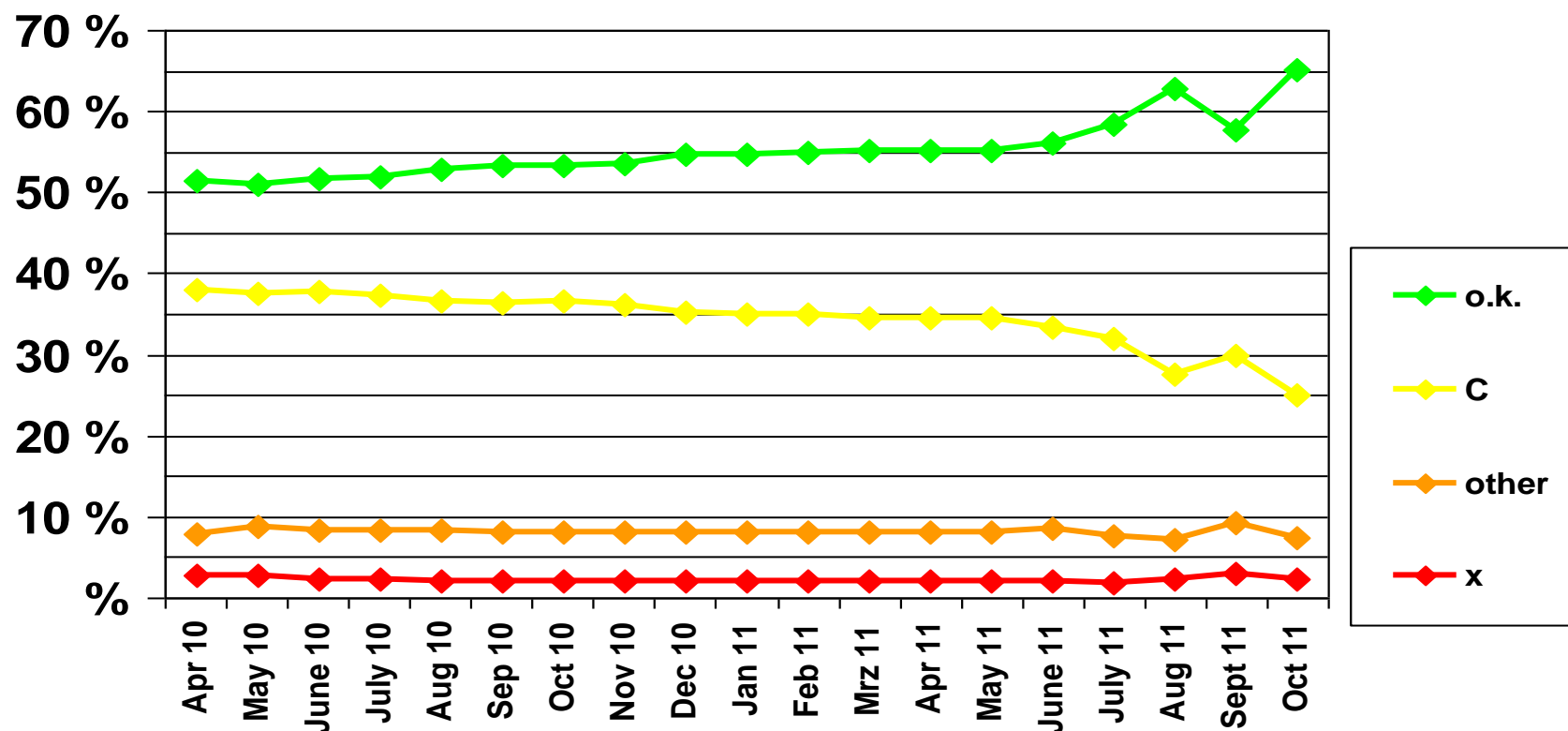
C: Leave in service until the next EVIC check

others: sorted out for other reasons, e.g. reprofiling

ok: no defects, leave in service

Keeper's total EVIC checks (all countries)
reported in keeper's registration country

Evolution of the EVIC categories findings over time (EU total, per month)



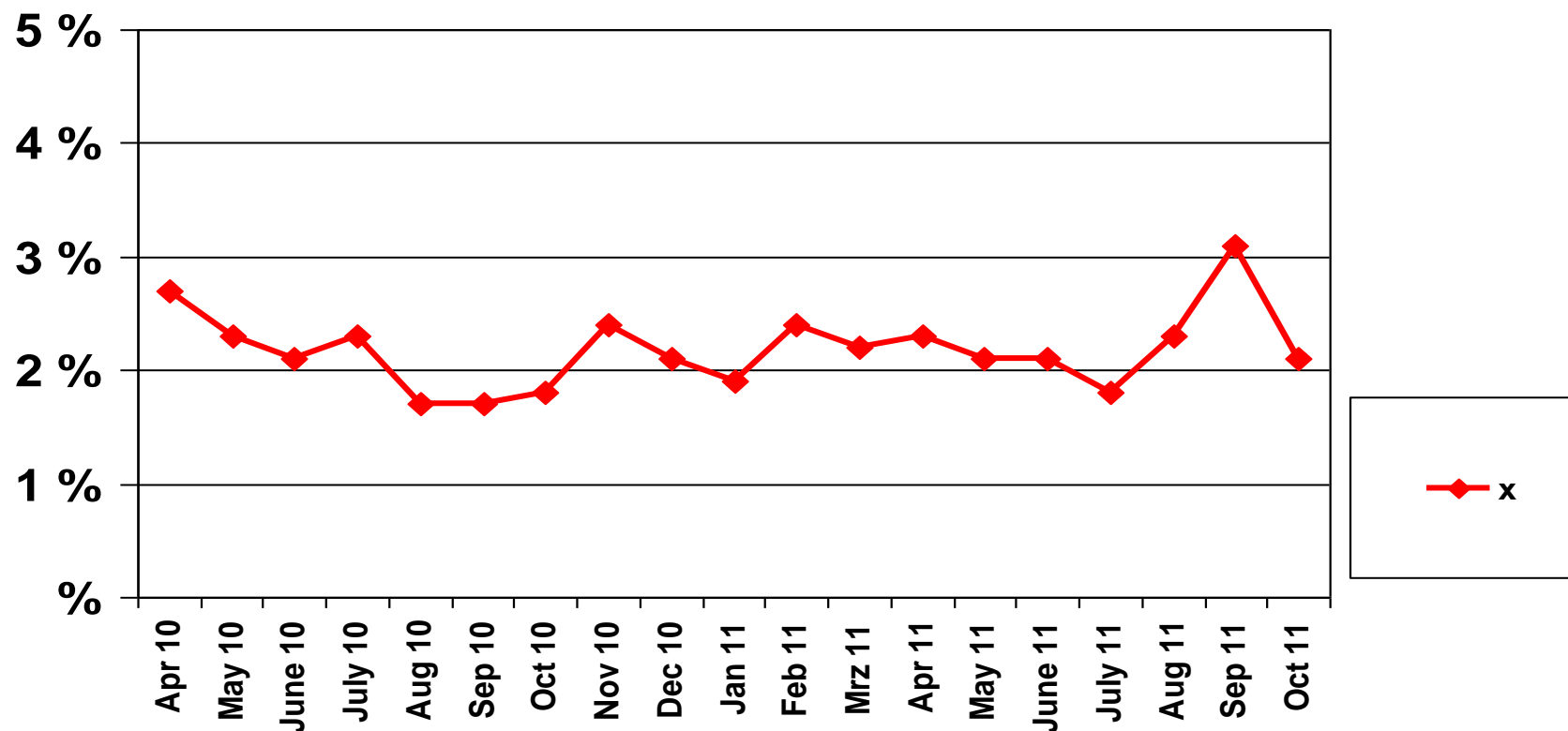
X: Remove from service without delay

others: sorted out for other reasons, e.g. reprofiling

C: Leave in service until the next EVIC check

ok: no defects, leave in service

Evolution of the EVIC categories findings over time (EU total, per month, only X)



X: Remove from service without delay

others: sorted out for other reasons, e.g. reprofiling

C: Leave in service until the next EVIC check

ok: no defects, leave in service